

OPINION & COMMENTARY

THE INDIANAPOLIS STAR

A GANNETT NEWSPAPER

Tim Swares
Editor of the Editorial Page
tim.swares@indystar.com
(317) 444-6126

Barbara A. Henry
President and Publisher
barbara.henry@indystar.com
(317) 444-8131

EUGENE C. FULLIAM 3180-8775, Publisher 394-8775
EUGENE S. FULLIAM 394-8796, Publisher 375-8797

Dennis R. Ryerson
Editor and Vice President
dennis.ryerson@indystar.com
(317) 444-6269

Pamela B. Finn
Managing Editor
pam.finn@indystar.com
(317) 444-6308

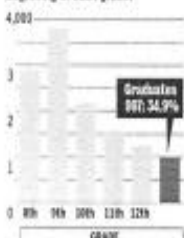
Dropout factories

IPS high schools are among nation's worst in producing graduates.

WHERE DID THEY GO?

The number of students in the Indianapolis Public Schools class of 2004 declined precipitously from eighth grade until graduation.

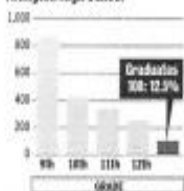
IPS Class of 2004 enrollment:
Total IPS students enrolled at the beginning of each grade:



Note: Completion rate based on eighth-grade enrollment.

IPS graduates by high school

Total students enrolled at the beginning of each grade in the district's five major high schools:



Arsenal Technical High School

1,100



One on one: At Manual High School, freshman Andrew Dyke gets homework help from media center director Lucile Koors, a former math and chemistry teacher. On average just 125 of the 450 freshmen who enter Manual in a typical year progress to their senior year on time.

The Indianapolis Public Schools operate some of the worst dropout factories in the nation. Hundreds

who enter Manual in a typical school year progress to their senior year on time. One freshman, David Kline, who turns 16 this month, already declares, "I'll

Yet, IPS officials also claim that many of the lost students transfer to other school districts. Bullfanz, however, notes that IPS' enrollment has declined in all

freshmen for the 2005-06 school year passed the eighth-grade ISTEP exam. That number, although still low, is significantly better than in previous years

LEFT BEHIND

A STAR EDITORIAL BOARD SERIES

Why you should care

About three out of 10 students in Indiana quit high school before graduating. Many become an enormous drain on taxpayers because they land in prison or require extensive social services. The dropout rate also hinders economic growth. Employers increasingly demand a well-educated work force. But Indiana is 46th in the nation in the education attainment level of the population. The high dropout rate means a loss of human capital that makes Indiana far less economically competitive.

Let's talk

What can the community do to reduce the number of students who drop out of school? What can the schools and the students themselves do?

State and local educators, as well as community activists and students will discuss answers to those questions and others during a community town hall at 7 p.m. May 24 in the auditorium at Ben Davis High School, 1200 N. Girls School Road. To register call 444-6170 or send e-mail to letstalk@indystar.com.

From May 15-22, 2005 *Indy Star* Left Behind IPS Dropout Series

<https://vorcreatex.com/wp-content/uploads/2021/02/May-15-22-2005-Indy-Star-Left-Behind-IPS-Dropout-Series.pdf>